

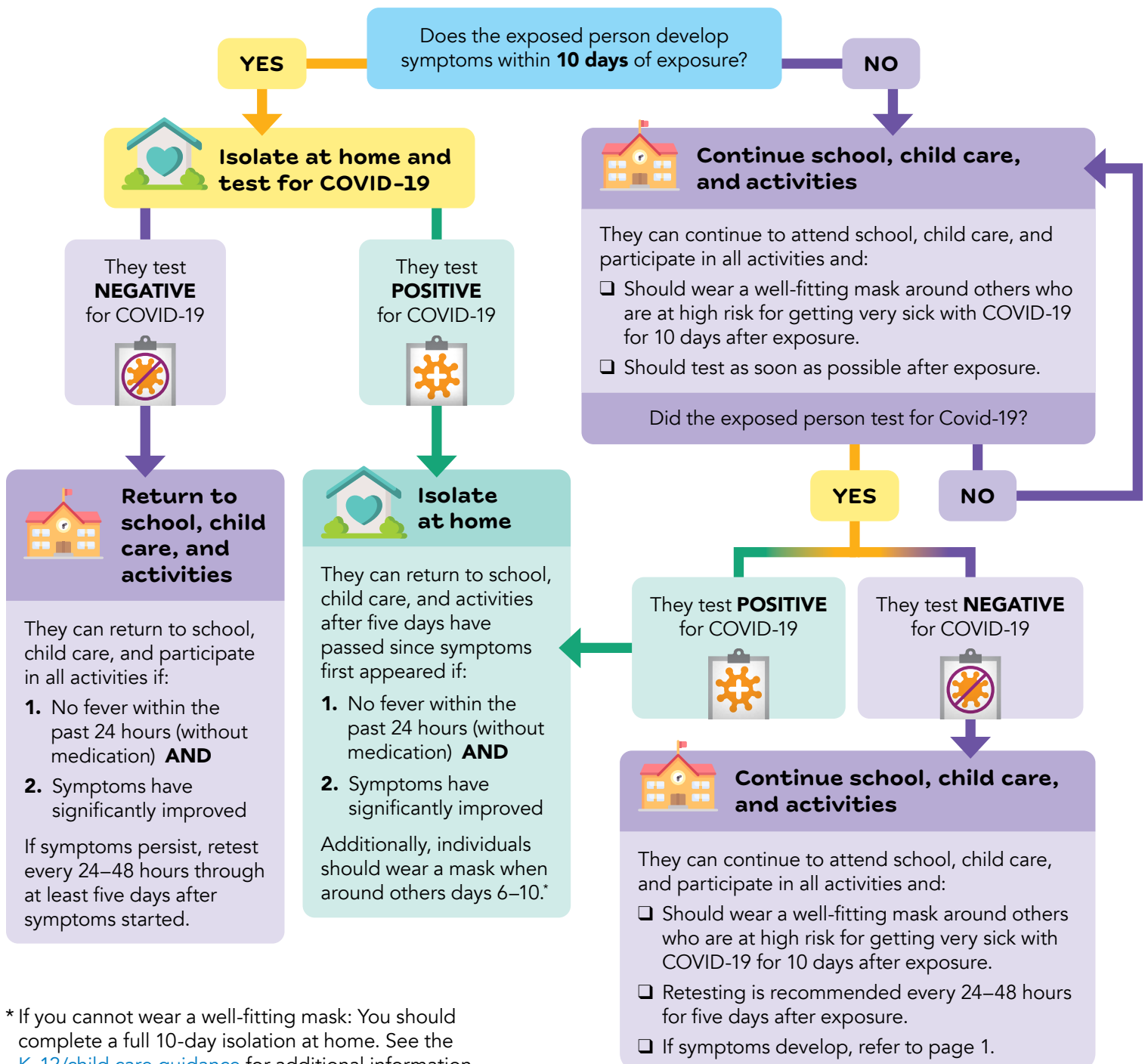
# What to do if you receive an exposure notification or think you have been exposed to COVID-19



This flowchart is for K-12 schools, child care, and connected extracurricular activities.

**Regardless of vaccination status, use the following guidelines:**

- Continue to attend school, child care, and activities.
- Monitor for symptoms for 10 days after exposure.
- Should test as soon as possible after exposure.
- Should wear a well-fitting mask for 10 days after exposure.



\* If you cannot wear a well-fitting mask: You should complete a full 10-day isolation at home. See the [K-12/child care guidance](#) for additional information.